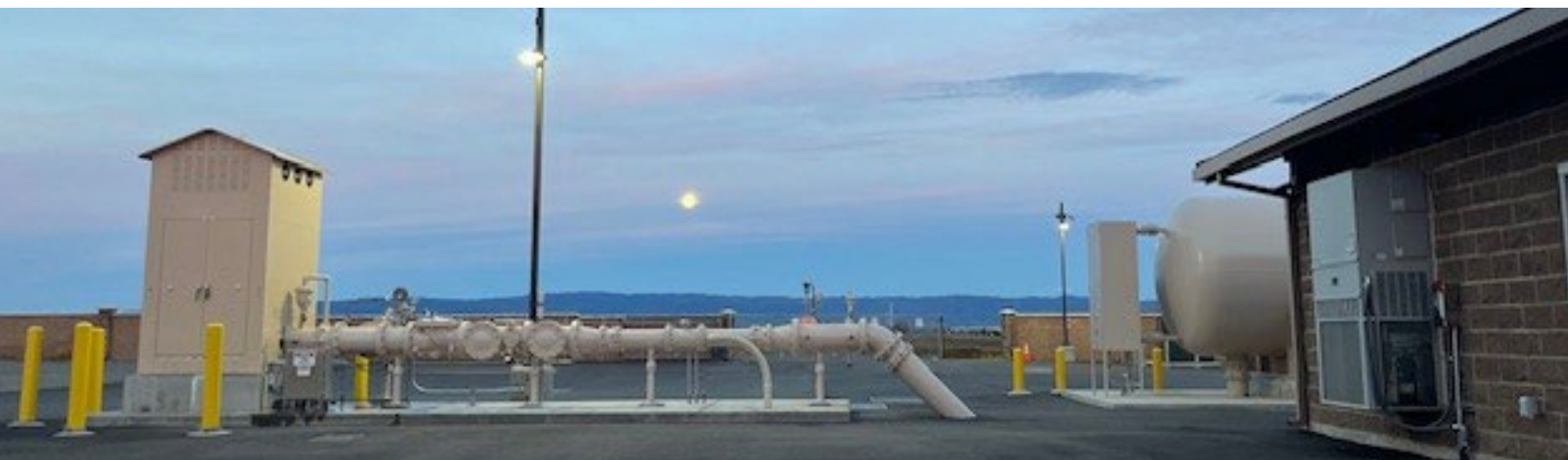
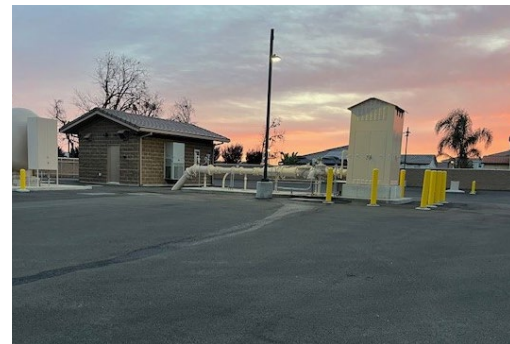


ANNUAL WATER QUALITY REPORT

Reporting Year 2025



Presented By
City of Dixon Public Water System

PWS ID#: CA4810009

Este informe contiene información muy importante sobre su agua para beber. Favor de comunicarse City of Dixon Utility Billing at (707) 678-7008 para asistirlo en español.



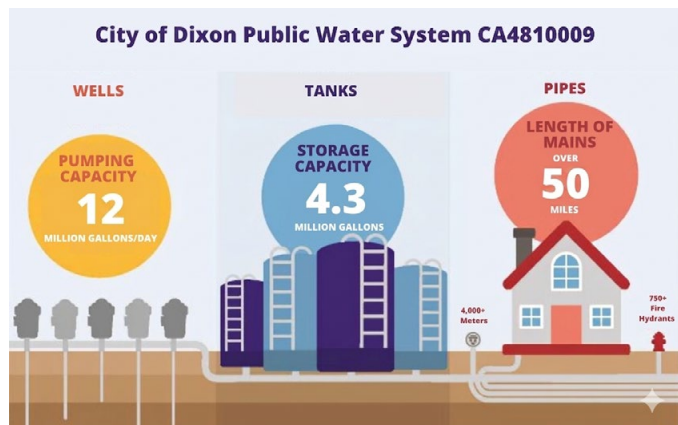
Introduction

A Consumer Confidence Report, or Water Quality Report, is an annual report with a focus on the quality of water provided by your water purveyor. The City of Dixon Public Water System is pleased to announce that the water we serve to our customers continues to meet all standards set by the U.S. Environmental Protection Agency (U.S. EPA) and State Water Resources Control Board (SWRCB), Division of Drinking Water. The City of Dixon monitors the drinking water from source to tap and uses a certified laboratory to analyze samples collected to ensure accurate results. The results and information provided in this report are specific to the City of Dixon Public Water System from January 1 to December 31, 2025. The state allows us to monitor for some contaminants less than once per year because the concentrations of these contaminants do not change frequently. Some of our data, though representative, is more than a year old.

Your Water Source and Supply Facilities

The source of all drinking water in the City of Dixon is groundwater pumped from hundreds of feet below the ground surface. The city's system operates and maintains five active production wells that pump water into the distribution system. The wells are located throughout the service area and have a total capacity of approximately 8,100 gallons per minute. The water system uses booster pumps along with the source wells to pressurize the system between 52 and 62 pounds of pressure per square inch (psi).

The water distribution system includes approximately 50 miles of main line and four aboveground steel storage tanks. These tanks can hold a combined 4.3 million gallons of water, ensuring adequate water supply during peak demand and the high flow demands of firefighting. Each distribution facility is equipped with an emergency backup generator that provides power in the event of an outage to avoid service interruption.



Hexavalent Chromium

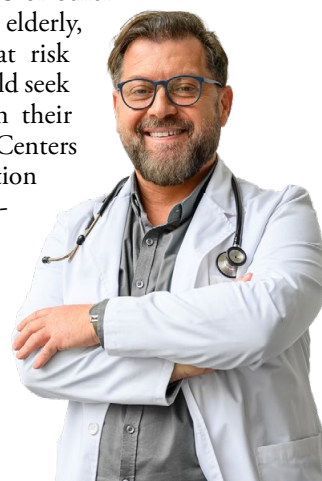
On April 17, 2024, the SWRCB, with resolution number 2024-0015, adopted a regulation for a hexavalent chromium maximum contaminant level (MCL) of 10 parts per billion (ppb). The MCL went into effect on October 1, 2024. Hexavalent chromium was detected at levels that exceed the MCL. While a water system of our size is not considered in violation of the hexavalent chromium MCL until after October 1, 2027, we are working to address this exceedance and comply with the MCL. Specifically, we are conducting a pilot study with a state-approved treatment technology so we can design and price appropriate treatment for your drinking water wells.

Source Water Assessments

Drinking water source assessments for the city's wells were completed between 2007 and 2023. The wells are considered most vulnerable to sewer collection systems, auto repair shops, chemical and petroleum pipelines, agricultural wells, and gas stations. You may request a summary of the assessment at (707) 678-7008.

Important Health Information

Some people may be more vulnerable to contaminants in drinking water than the general population. Immunocompromised persons such as persons with cancer undergoing chemotherapy, persons who have undergone organ transplants, people with HIV/AIDS or other immune system disorders, some elderly, and infants can be particularly at risk from infections. These people should seek advice about drinking water from their health-care providers. U.S. EPA/Centers for Disease Control and Prevention (CDC) guidelines on appropriate means to lessen the risk of infection by *Cryptosporidium* and other microbial contaminants are available from the Safe Drinking Water Hotline at (800) 426-4791 or epa.gov/safewater.



QUESTIONS?

The City of Dixon is committed to providing superior customer service. For water service or billing questions, you can reach our dedicated and knowledgeable staff at (707) 678-7008. If you have questions related to water quality, please contact Water Operations Supervisor Josh Hudson at (707) 678-7050, ext. 5501. For after-hours calls and emergencies, a city operator is always available at (707) 676-3005.

Substances That Could Be in Water

The sources of drinking water (both tap water and bottled water) include rivers, lakes, streams, ponds, reservoirs, springs, and wells. As water travels over the surface of the land or through the ground, it dissolves naturally occurring minerals and, in some cases, radioactive material and can pick up substances resulting from the presence of animals or from human activity.

Contaminants that may be present in source water include:

Microbial Contaminants, such as viruses and bacteria, which may come from sewage treatment plants, septic systems, agricultural livestock operations, and wildlife.

Inorganic Contaminants, such as salts and metals, which can be naturally occurring or result from urban stormwater runoff, industrial or domestic wastewater discharges, oil and gas production, mining, or farming.

Pesticides and Herbicides, which may come from a variety of sources such as agriculture, urban stormwater runoff, and residential uses.

Organic Chemical Contaminants, including synthetic and volatile organic chemicals, which are by-products of industrial processes and petroleum production and can also come from gas stations, urban stormwater runoff, agricultural application, and septic systems.

Radioactive Contaminants, which can be naturally occurring or the result of oil and gas production and mining activities.

To ensure that tap water is safe to drink, the U.S. EPA and SWRCB prescribe regulations that limit the amount of certain contaminants in water provided by public water systems. U.S. Food and Drug Administration regulations and California law also establish limits for contaminants in bottled water that provide the same protection for public health.

Drinking water, including bottled water, may reasonably be expected to contain at least small amounts of some contaminants. The presence of contaminants does not necessarily indicate that water poses a health risk. More information about contaminants and potential health effects can be obtained by calling the U.S. EPA's Safe Drinking Water Hotline at (800) 426-4791.

Lead in Water

Lead can cause serious health effects in people of all ages, especially pregnant people, infants (both formula-fed and breastfed), and young children. Lead in drinking water is primarily from materials and parts used in service lines and in home plumbing. The City of Dixon Public Water System is responsible for providing high-quality drinking water and removing lead pipes but cannot control the variety of materials used in the plumbing in your home. Because lead levels may vary over time, lead exposure is possible even when your tap sampling results do not detect lead at one point in time. You can help protect yourself and your family by identifying and removing lead materials within your home plumbing and taking steps to reduce your family's risk. Using a filter certified by an American National Standards Institute-accredited certifier to reduce lead is effective in reducing lead exposures. Follow the instructions provided with the filter to ensure it is used properly. Use only cold water for drinking, cooking, and making baby formula. Boiling does not remove lead from water.

Before using tap water for drinking, cooking, or making baby formula, flush your pipes for several minutes. You can do this by running your tap, taking a shower, or doing laundry or a load of dishes. If you have a lead service line or galvanized requiring replacement service line, you may need to flush your pipes for a longer period. If you are concerned about lead in your water and wish to have it tested, contact City of Dixon Water Operations at (707) 678-7050. Information on lead in drinking water, testing methods, and steps you can take to minimize exposure is available at epa.gov/safewater/lead.

In January 2017, the SWRCB issued a permit amendment establishing requirements for water purveyors to provide assistance and complete lead monitoring and sampling for all kindergarten through 12th-grade schools. The City of Dixon has worked collaboratively with the school district within the water system service area. The City of Dixon provided assistance and completed testing for the Dixon Unified School District at three local schools (Tremont Elementary, Gretchen Elementary, and Dixon High School) during the spring of 2019. For information related to the testing of lead in schools, visit waterboards.ca.gov/drinking_water/certlic/drinkingwater/leadsamplinginschools.html.

To address lead in drinking water, public water systems were required to develop and maintain an inventory of service line materials by October 16, 2024. Developing an inventory and identifying the location of lead service lines (LSL) is the first step for beginning LSL replacement and protecting public health. The City of Dixon completed its LSL inventory in early 2024 with no lead service lines reported. To access a copy of the LSL inventory, please contact Water Operations Supervisor Josh Hudson at (707) 678-7050, ext. 5501.



Test Results

Our water is monitored for many different kinds of substances on a very strict sampling schedule, and the water we deliver must meet specific health standards. Here, we only show those substances that were detected in our water (a complete list of all our analytical results is available upon request). Remember that detecting a substance does not mean the water is unsafe to drink; our goal is to keep all detects below their respective maximum allowed levels.

The state recommends monitoring for certain substances less than once per year because the concentrations of these substances do not change frequently. In these cases, the most recent sample data is included, along with the year in which the sample was taken.

MICROBIOLOGICAL

CONTAMINANT	YEAR SAMPLED	HIGHEST NO. OF DETECTIONS	NO. OF MONTHS IN VIOLATION	MCL	PHG (MCLG)	TYPICAL SOURCE OF BACTERIA	IN COMPLIANCE
Total Coliform Bacteria (Fewer than 40 samples per-month)	2025	0	0	One (1) positive monthly sample	0	Naturally present in the environment	Yes
Fecal Coliform and <i>E. coli</i>	2025	0	0	0	0	Human and animal fecal waste	Yes

LEAD AND COPPER

LEAD AND COPPER	UNITS	YEAR SAMPLED	NO. OF SAMPLES COLLECTED	90TH PERCENTILE LEVEL DETECTED	AL	NO. SITES EXCEEDING AL	PHG (MCLG)	TYPICAL SOURCE OF CONTAMINANT	IN COMPLIANCE
Lead	ppb	2024	31	ND	15	0	.2	Internal corrosion of household water plumbing systems; discharges from industrial manufacturers; erosion of natural deposits	Yes
Copper	ppm	2024	31	0.14	1.3	0	.3	Internal corrosion of household plumbing systems; erosion of natural deposits; leaching from wood preservatives	Yes

DISINFECTANTS AND DISINFECTION BYPRODUCTS

CONSTITUENT	UNITS	YEAR SAMPLED	RANGE OF DETECTION	DETECTIONS AVERAGE	MCL [MRDL]	PHG [MRDLG]	TYPICAL SOURCE OF CONTAMINATE	IN COMPLIANCE
Free Chlorine	ppm	2025	0.82 - 0.88	0.85	[4]	[4]	Added to drinking water for disinfection	Yes

* This Consumer Confidence Report (CCR) reflects changes in drinking water regulatory requirements during 2021. These revisions add the requirements of the federal Revised Total Coliform Rule, effective since April 1, 2016, to the existing state Total Coliform Rule. The revised rule maintains the purpose to protect public health by ensuring the integrity of the drinking water distribution system and monitoring for the presence of microbials (i.e., total coliform and *E. coli* bacteria). The U.S. EPA anticipates greater public health protection as the rule requires water systems that are vulnerable to microbial contamination to identify and fix problems. Water systems that exceed a specified frequency of total coliform occurrences are required to conduct an assessment to determine if any sanitary defects exist. If found, these must be corrected by the water system. The state Revised Total Coliform Rule became effective July 1, 2021.

Definitions

90th %ile: The levels reported for lead and copper represent the 90th percentile of the total number of sites tested. The 90th percentile is equal to or greater than 90% of our lead and copper detections.

AL (Regulatory Action Level): The concentration of a contaminant which, if exceeded, triggers treatment or other requirements that a water system must follow.

MCL (Maximum Contaminant Level): The highest level of a contaminant that is allowed in drinking water. Primary MCLs are set as close to the PHGs (or MCLGs) as is economically and technologically feasible. Secondary MCLs (SMCLs) are set to protect the odor, taste, and appearance of drinking water.

MCLG (Maximum Contaminant Level Goal): The level of a contaminant in drinking water below which there is no known or expected risk to health. MCLGs are set by the U.S. EPA.

MFL (million fibers per liter): A measure of the presence of asbestos fibers that are longer than 10 micrometers.

MRDL (Maximum Residual Disinfectant Level): The highest level of a disinfectant allowed in drinking water. There is convincing evidence that addition of a disinfectant is necessary for control of microbial contaminants.

MRDLG (Maximum Residual Disinfectant Level Goal): The level of a drinking water disinfectant below which there is no known or expected risk to health. MRDLGs do not reflect the benefits of the use of disinfectants to control microbial contaminants.

NA: Not applicable.

ND (Not detected): Indicates that the substance was not found by laboratory analysis.

NS: No standard.

NTU (Nephelometric Turbidity Units): Measurement of the clarity, or turbidity, of water. Turbidity in excess of 5 NTU is just noticeable to the average person.

pCi/L (picocuries per liter): A measure of radioactivity.

PDWS (Primary Drinking Water Standard): MCLs and MRDLs for contaminants that affect health, along with their monitoring and reporting requirements and water treatment requirements.

PHG (Public Health Goal): The level of a contaminant in drinking water below which there is no known or expected risk to health. PHGs are set by the California EPA.

ppb (parts per billion): One part substance per billion parts water (or micrograms per liter).

ppm (parts per million): One part substance per million parts water (or milligrams per liter).

µmho/cm (micromhos per centimeter): A unit expressing the amount of electrical conductivity of a solution.

PRIMARY DRINKING WATER STANDARDS – SOURCE WATER

Inorganic Chemicals

CONSTITUENT	UNITS	YEAR SAMPLED	RANGE OF DETECTION	DETECTIONS AVERAGE	MCL [MRDL]	PHG [MRDLG]	TYPICAL SOURCE OF CONTAMINATE	IN COMPLIANCE
Arsenic	ppb	2024	ND - 3	1	10	0.004	Erosion of natural deposits; runoff from orchards; glass and electronics production wastes	Yes
Barium	ppm	2024	0.13 - 0.18	0.15	1	2	Erosion of natural deposits, discharge from oil drilling wastes and from metal	Yes
**Chromium (Hexavalent)	ppb	2025	16 - 27	21.5	10	0.02	Erosion of natural deposits; transformation of naturally occurring trivalent chromium to hexavalent chromium by natural processes and human activities such as discharges from electroplating factories, leather tanneries, wood preservation, chemical synthesis refractory production.	N/A
Chromium (total)	ppb	2024	20 - 27	23.67	50	(100)	Erosion of natural deposits, discharge from steel and pulp mills and chrome plating	Yes
Nitrate as N	ppm	2025	2.2 - 4.4	3.8	10	10	Runoff and leaching from fertilizer use; leaching from septic tanks and sewage; erosion of natural deposits	Yes
Selenium	ppb	2024	ND - 11	3.67	50	30	Discharge from petroleum, glass, and metal refineries; erosion of natural deposits; discharge from mines and chemical manufacturers; runoff from livestock lots (feed additive)	Yes

Radiological

CONSTITUENT	UNITS	YEAR SAMPLED	RANGE OF DETECTION	DETECTIONS AVERAGE	MCL [MRDL]	PHG [MRDLG]	TYPICAL SOURCE OF CONTAMINATE	IN COMPLIANCE
Gross Alpha	pCi/L	2020	0.77 - 2.54	1.74	15	0	Erosion of natural deposits	Yes
Uranium	pCi/L	2020	1.16 - 3.97	1.99	20	0.43	Erosion of natural deposits	Yes

*The results in the table above are for all primary active sources excluding Homestead well (DW 55). Because the well was sampled in 2023 but brought online in 2025 the results have been kept separate until all source monitoring is synced.

*The State allows us to monitor for some contaminants less than once per year because the concentrations of these contaminants do not change frequently. Some of our data, though representative, are more than one year old.

**The City of Dixon Public Water System is not in violation of the chromium (hexavalent) MCL until after October 1st, 2027.

Distribution Disinfection and Water Quality

A small amount of sodium hypochlorite (chlorine) is added at each active source to disinfect the water supply in the distribution system. The addition of chlorine reduces the possibility of microbiological contamination in your water supply. During 2025, weekly bacteriological samples were collected at representative points within the distribution system. Bacteriological samples were also collected whenever a new main line was placed into service or anytime pressure was reduced below 5 psi for a system repair.



Public Meetings

Do you have questions, comments, concerns, thoughts, or ideas related to your water system? We encourage customer participation! City council meetings are scheduled for the first and third Tuesday of each month.



UNREGULATED AND SECONDARY DRINKING WATER STANDARDS – SOURCE WATER

Secondary Standards (Regulations for Aesthetics)

CONSTITUENT	UNITS	YEAR SAMPLED	RANGE OF DETECTION	DETECTIONS AVERAGE	SMCL	PHG (MCLG)	TYPICAL SOURCE OF CONTAMINATE	IN COMPLIANCE
Chloride	ppm	2024	11 - 17	13	500	N/A	Runoff/leaching from natural deposits: industrial wastes	Yes
Specific Conductance	us	2024	530 - 560	547	1600	N/A	Substance that form ions when in water: seawater influence	Yes
Sulfate	ppm	2024	27 - 30	28.3	500	N/A	Runoff/leaching from natural deposits: industrial wastes	Yes
Total Dissolved Solids	ppm	2024	300 - 330	327	1000	N/A	Runoff/leaching from natural deposits	Yes
Turbidity	NTU	2024	0.10 - 0.15	0.13	5	N/A	Turbidity in groundwater is mostly inorganic and caused by natural geological factors	Yes

Unregulated Contaminants

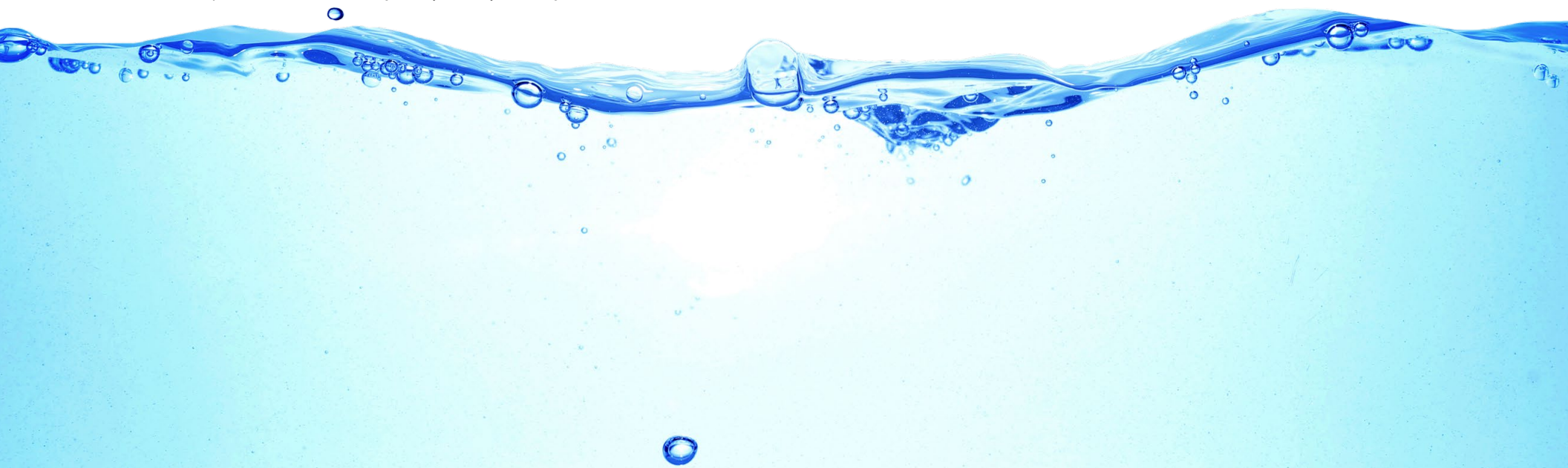
CONSTITUENT	UNITS	YEAR SAMPLED	RANGE OF DETECTION	DETECTIONS AVERAGE	SMCL	PHG (MCLG)	TYPICAL SOURCE OF CONTAMINATE	IN COMPLIANCE
Alkalinity	ppm	2024	210 - 220	217	N/A	N/A	No standardized “source of substance” language	N/A
Boron	ppb	2024	400 - 460	433	N/A	N/A	No standardized “source of substance” language	N/A
Calcium	ppm	2024	21 - 28	24.67	N/A	N/A	No standardized “source of substance” language	N/A
Hardness (total)	ppm	2024	130 - 190	163	N/A	N/A	No standardized “source of substance” language	N/A
Lithium	ppb	2023	28 - 40.5	34	N/A	N/A	No standardized “source of substance” language	N/A
Magnesium	ppm	2024	18 - 30	24.3	N/A	N/A	No standardized “source of substance” language	N/A
pH	Units	2024	7.95 - 8.09	8.02	N/A	N/A	No standardized “source of substance” language	N/A
Potassium	ppm	2024	2.1 - 2.6	2.27	N/A	N/A	No standardized “source of substance” language	N/A
Sodium	ppm	2024	42 - 67	56	N/A	N/A	No standardized “source of substance” language	N/A
Vanadium	ppb	2024	3.8 - 8.6	6.23	N/A	N/A	No standardized “source of substance” language	N/A

*The results in the table above are for all primary active sources excluding Homestead well (DW 55). Because the well was sampled in 2023 but brought online in 2025 the results have been kept separate until all source monitoring is synced.

* There are no PHGs, MCLGs, or mandatory standard health effects language Secondary Standards or Unregulated Contaminants.

*“Hardness” is the sum of polyvalent cations present in the water, generally magnesium and calcium. The cations are usually naturally occurring.

*“Sodium” refers to the salt present in the water and is generally naturally occurring.



The results below are specific to Homestead Well (DW 55). The well was sampled for water quality in 2023 for State approval but was not served to the community until Summer 2025.

PRIMARY DRINKING WATER STANDARDS – SOURCE WATER

Inorganic Chemicals

CONSTITUENT	UNITS	YEAR SAMPLED	DETECTIONS	MCL	PHG (MCLG)	TYPICAL SOURCE OF CONTAMINATE	IN COMPLIANCE
Arsenic	ppb	2023	2.4	10	0.004	Erosion of natural deposits; runoff from orchards; glass and electronics production wastes	Yes
Asbestos	MFL	2023	1.5	7	7	Internal corrosion of asbestos cement water mains; erosion of natural deposits	Yes
**Chromium (Hexavalent)	ppb	2025	17	10	0.02	Erosion of natural deposits; transformation of naturally occurring trivalent chromium to hexavalent chromium by natural processes and human activities such as discharges from electroplating factories, leather tanneries, wood preservation, chemical synthesis refractory production.	N/A
Barium	ppm	2023	0.1	1	2	Erosion of natural deposits, discharge from oil drilling wastes and from metal	Yes
Chromium (total)	ppb	2023	12	50	(100)	Erosion of natural deposits, discharge from steel and pulp mills and chrome plating	Yes
Nitrate as N	ppm	2023	3.7	10	10	Runoff and leaching from fertilizer use; leaching from septic tanks and sewage; erosion of natural deposits	Yes
Selenium	ppb	2023	47	50	30	Discharge from petroleum, glass, and metal refineries; erosion of natural deposits; discharge from mines and chemical manufacturers; runoff from livestock lots (feed additive)	Yes

Radiological

CONSTITUENT	UNITS	YEAR SAMPLED	DETECTIONS	MCL	PHG (MCLG)	TYPICAL SOURCE OF CONTAMINATE	IN COMPLIANCE
Gross Alpha	pCi/L	2023	2.32	15	0	Erosion of natural deposits	Yes
Uranium	pCi/L	2023	1.4	20	0.43	Erosion of natural deposits	Yes

UNREGULATED AND SECONDARY DRINKING WATER STANDARDS – SOURCE WATER

Secondary Standards (Regulations for Aesthetics)

CONSTITUENT	UNITS	YEAR SAMPLED	DETECTIONS	MCL	PHG (MCLG)	TYPICAL SOURCE OF CONTAMINATE	IN COMPLIANCE
Chloride	ppm	2023	24	500	N/A	Runoff/leaching from natural deposits: industrial wastes	Yes
Specific Conductance	us	2023	650	1600	N/A	Substance that form ions when in water: seawater influence	Yes
Sulfate	ppm	2023	51	500	N/A	Runoff/leaching from natural deposits: industrial wastes	Yes
Total Dissolved Solids	ppm	2023	410	1000	N/A	Runoff/leaching from natural deposits	Yes
Turbidity	NTU	2023	0.3	5	N/A	Turbidity in groundwater is mostly inorganic and caused by natural geological factors	Yes

Unregulated Contaminants

CONSTITUENT	UNITS	YEAR SAMPLED	DETECTIONS	MCL	PHG (MCLG)	TYPICAL SOURCE OF CONTAMINATE	IN COMPLIANCE
Alkalinity	ppm	2023	230	N/A	N/A	No standardized “source of substance” language	N/A
Boron	ppb	2023	480	N/A	N/A	No standardized “source of substance” language	N/A
Calcium	ppm	2023	27	N/A	N/A	No standardized “source of substance” language	N/A
Hardness (total)	ppm	2023	180	N/A	N/A	No standardized “source of substance” language	N/A
Magnesium	ppm	2023	26	N/A	N/A	No standardized “source of substance” language	N/A
pH	Units	2023	7.72	N/A	N/A	No standardized “source of substance” language	N/A
Potassium	ppm	2023	4.5	N/A	N/A	No standardized “source of substance” language	N/A
Sodium	ppm	2023	84	N/A	N/A	No standardized “source of substance” language	N/A
Vanadium	ppb	2023	25	N/A	N/A	No standardized “source of substance” language	N/A

* There are no PHGs, MCLGs, or mandatory standard health effects language Secondary Standards or Unregulated Contaminants.

**Hardness” is the sum of polyvalent cations present in the water, generally magnesium and calcium. The cations are usually naturally occurring.

**Sodium” refers to the salt present in the water and is generally naturally occurring.